

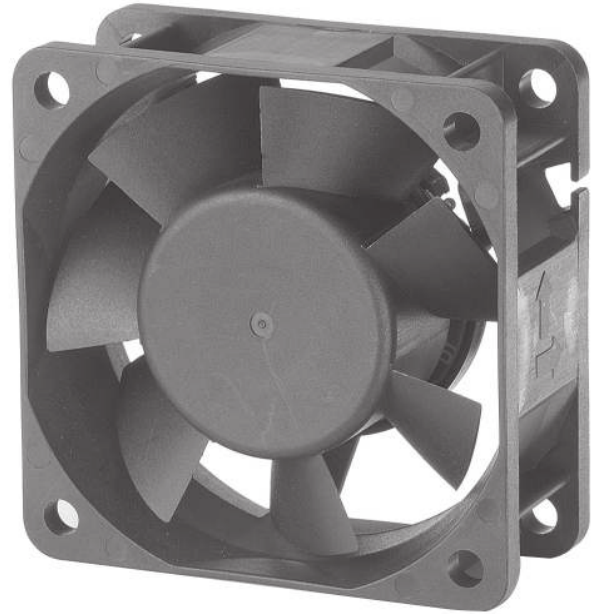
COMMONWEALTH DC BRUSHLESS FAN

FP-108F/DC

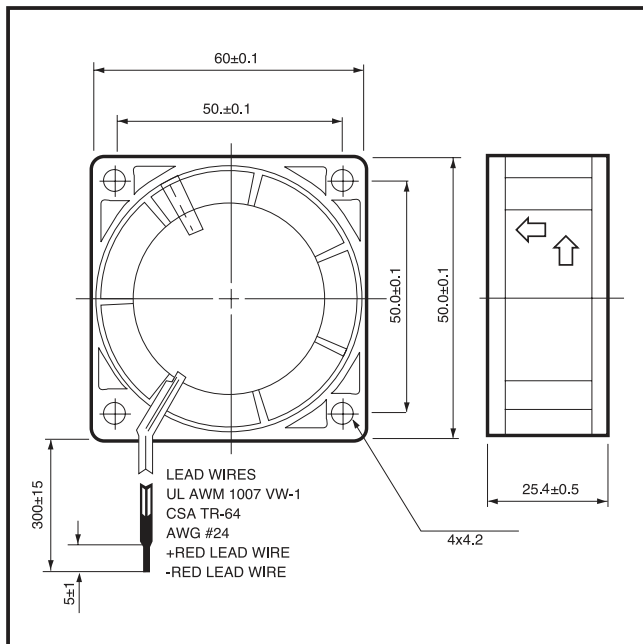
60x60x25.4mm

DESIGN FEATURES

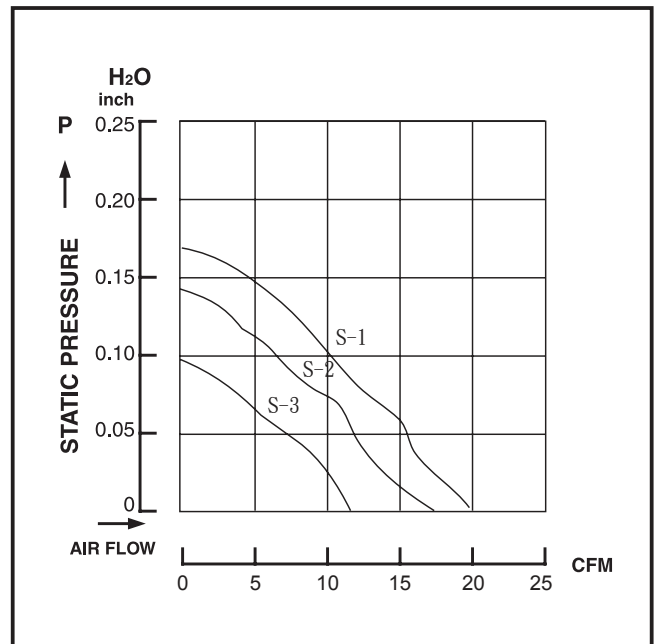
- ***BEARING SYSTEM:** SLEEVE BEARING & BALL BEARING
- ***IMPELLER:** PLASTIC WITH FIBER GLASS FILLED UL 94V-0
- ***HOUSING:** PLASTIC WITH FIBER GLASS FILLED UL 94V-0
- ***MOTOR:** BRUSHLESS DC
- ***CONNECTING:** WIRE LEADS
- ***SPEED:** S-1 HIGH SPEED TYPE
S-2 MEDIUM SPEED TYPE
S-3 LOW SPEED TYPE
- ***AVAILABLE FG TYPE FOR SPEED SENSOR SIGNAL**
- ***AVAILABLE RD TYPE FOR ROTOR LOCKED ALARM SIGNAL**



DIMENSIONS:MM



PERFORMANCE



SPECIFICATIONS

Specifications are subject to change without notice

MODEL NO.	VOLTAGE (VDC)	AIR (CFM)	VOLUME (M ³ /MIN)	CURRENT (A)	POWER (W)	SPEED (RPM)	STATIC PRESSURE (INCH-H ₂ O)	NOISE (dBA)
FP-108F/DC (S-1)	5	20.0	0.57	0.33	1.65	4000	0.17	30
	12	20.0	0.57	0.13	1.56	4000	0.17	30
	24	20.0	0.57	0.12	2.88	4000	0.17	30
FP-108F/DC (S-2)	12	15.5	0.44	0.11	1.32	3200	0.14	25
	24	15.5	0.44	0.10	2.40	3200	0.14	25
FP-108F/DC (S-3)	12	12.7	0.36	0.09	1.08	2900	0.10	22
	24	12.7	0.36	0.08	1.92	2900	0.10	22